

Tokai Carbon – Isotropic Graphite Grade

HK - 2

1. Typical Properties

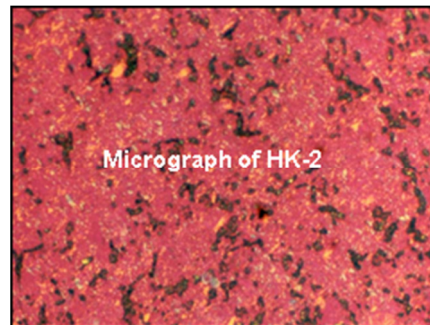
Specific Gravity	g/cm ³	1.82
Specific Resistance	μΩm	13.5
Flexural Strength	MPa	64
Hardness	Shore	64
Average Grain Size	μm	7

All properties measured room temperatures except for C.T.E.
 C.T.E. = Coefficient Thermal Expansion (R.T. to 1000°C)
 Flexural Strength determined using third point loading
 All properties are typical values and are not to be used for specification limits

2. Standard Sizes

311 x 311 x 622mm

235 x 467 x 1245mm



3. Application

Roughing out and finishing of medium to small high accuracy, sharp definition mould and press tools to 22 VDI.